

2026 中研 GIS 論壇

議程表 Agenda

2026 Academia Sinica Geospatial Forum

2026.07.24 (五) 09:00-17:35 中央研究院人文社會科學館國際會議廳

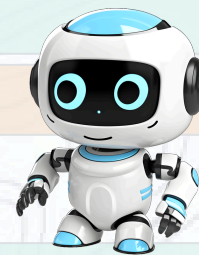
08:30-09:00

報到 / Registration

09:00-09:15

開幕致詞 & 大合照 / Opening Remarks & Group Photo

特邀演講 / Keynote Speeches



09:15-09:55

蕭世瑜 Shih-Lung Shaw

Chancellor's Professor and Alvin and Sally Beaman Professor, University of Tennessee
Past President, University Consortium for Geographic Information Science, USA

▶ **Humans in GIScience and GeoAI**

09:55-10:35

南光祐 Kwang Woo Nam

Professor, Kyungsoong University
Chairman, National Smart City Committee
Honorary President, Korea Association of Geographic Information Studies

▶ **Is Urban Compactness Efficient?: Revisiting Efficiency across Core and Peripheral Areas**

10:35-10:55 Break

10:55-11:35

中谷友樹 Tomoki Nakaya

Professor, Tohoku University
Vice President, Geographic Information System Association, Japan

▶ **The Geography Beneath: Exploring Historical Geographic Information for Uncertain Futures**

圓桌論壇 / Roundtable Discussion

11:35-12:15

主持人：洪榮宏 Jung-Hong Hong

Professor, National Cheng Kung University
President, Taiwan Geographic Information Society

與談人：

蕭世瑜 Shih-Lung Shaw / University Consortium for Geographic Information Science, USA

南光祐 Kwang Woo Nam / Korea Association of Geographic Information Studies, South Korea

中谷友樹 Tomoki Nakaya / Geographic Information System Association, Japan

12:15-13:15 Lunch

場次演講 / Section Speeches

13:15-13:15

溫在弘 Tzai-Hung Wen / Professor, National Taiwan University

▶ **Autonomous Epidemic Spatial Analysis via MCP-Powered Agentic AI**

吳治達 Chih-Da Wu / Professor, National Cheng Kung University

▶ **Geo-AI-Powered Total Solutions for Advancing Air Pollution Estimation**

陳盈蓁 Ying-Fen Chen / Assistant Professor, National Taipei University of Technology

▶ **Beyond Representation: Rethinking 3D City Models as Communication Media in Urban Processes**

白璧玲 Pi-Ling Pai / Research Associate, Academia Sinica

▶ **Spatio-Temporal Dynamics of Tea Plantation Landscapes: Insights from AI-Based Detection of Land-Use Symbols in Historical Topographic Maps**

15:15-15:35 Break

15:35-17:05

郭俊麟 Chun-Lin Kuo / Associate Professor, National Dong Hwa University

▶ **From AI for GIS to GIS for AI: Implications of Japan's GeoAI Development Blueprint for Frontier Applications in Smart Disaster Management in Taiwan**

盧沛文 Pei-Wen Lu / Professor, National Changhua University of Education

▶ **Spatiotemporal (In)competition for Maritime Space: Fishing Vessels and Offshore Wind Operations Vessels Revealed via AIS Data (2019-2025)**

賴哲儂 Jhe-Syuan Lai / Associate Professor, Feng Chia University

▶ **Improving GIS-based Landslide Inventory Production with Unsupervised Machine Learning and Geospatial Factors**

17:05-17:35

綜合討論 / Panel Discussion

主辦單位：



人文社會科學研究中心
Research Center for Humanities and Social Sciences



地理資訊科學研究專題中心
Center for GIS, RCHSS, Academia Sinica



Website Link